



Molatelo Engineers (Pty) Ltd

Company PROFILE



INTRODUCTION

Molatelo Engineers Pty Ltd is an existing consulting service corporation providing project management services in the engineering, and different kinds of projects.

We are a dynamic team of young South Africans that have joined forces to facilitate the establishment of the company.

Molatelo Engineers Pty Ltd is a black owned enterprise that promotes a Broad Based empowerment.

Molatelo Engineers Pty Ltd has assembled a strong and representative management team with impeccable track records of performance in the different sectors which operates, thereby enabling the benefits of BEE participation in these different sectors to flow to a broader base or HDI's including the personnel of the company.



OBJECTIVES

- To assist with job creation
- We aim to reduce the unemployment rate in the country
- To transfer skills

GOALS

To carry a reputation in the market place for delivering a quality service that satisfies our client with quality service at a reasonable cost

Molatelo Engineers Pty Ltd believes that our customers need analysis research and development, understanding of market trends and sound profitable business such as Molatelo Engineers Pty Ltd to achieve this goal.

In pursuit of the stated goal, the owner and the management staff always treat and the Community it serves with respect and dignity they deserve.

MISSION

The business strives to:

Provide responsive, safe and trusted solutions to our clients with the highest-quality, most dependable, cost-effective engineering, design and construction management services in the industry. Our Principals have built their careers understanding and developed confidence and trusted, long-lasting relationship within the industry by conducting our business with integrity, honesty and hard work.



VALUES

- Strive to meet the needs of our customers through services excellence
- Respect the worth and dignity for all people
- Maintain high worth ethical and moral code of conduct in business and social environment.

MOTTO

“Keep people working”

PROSPECTS FOR SUCCESS

- The venture's prospects for success are enhanced by the expertise of its members in engineering service coupled with deliberate consultancy in business and marketing strategies.

Molatelo Engineers Pty Ltd actively seeks long-term relationships with its clients, relying on the quality of its services to bring clients back.

PRODUCTION DESCRIPTION

PRODUCT/SERVICE

The services undertaken by Molatelo Engineers Pty Ltd are:

- Project Management Services in the Civil Engineering and Building
- Structural Engineering
- Water Engineering

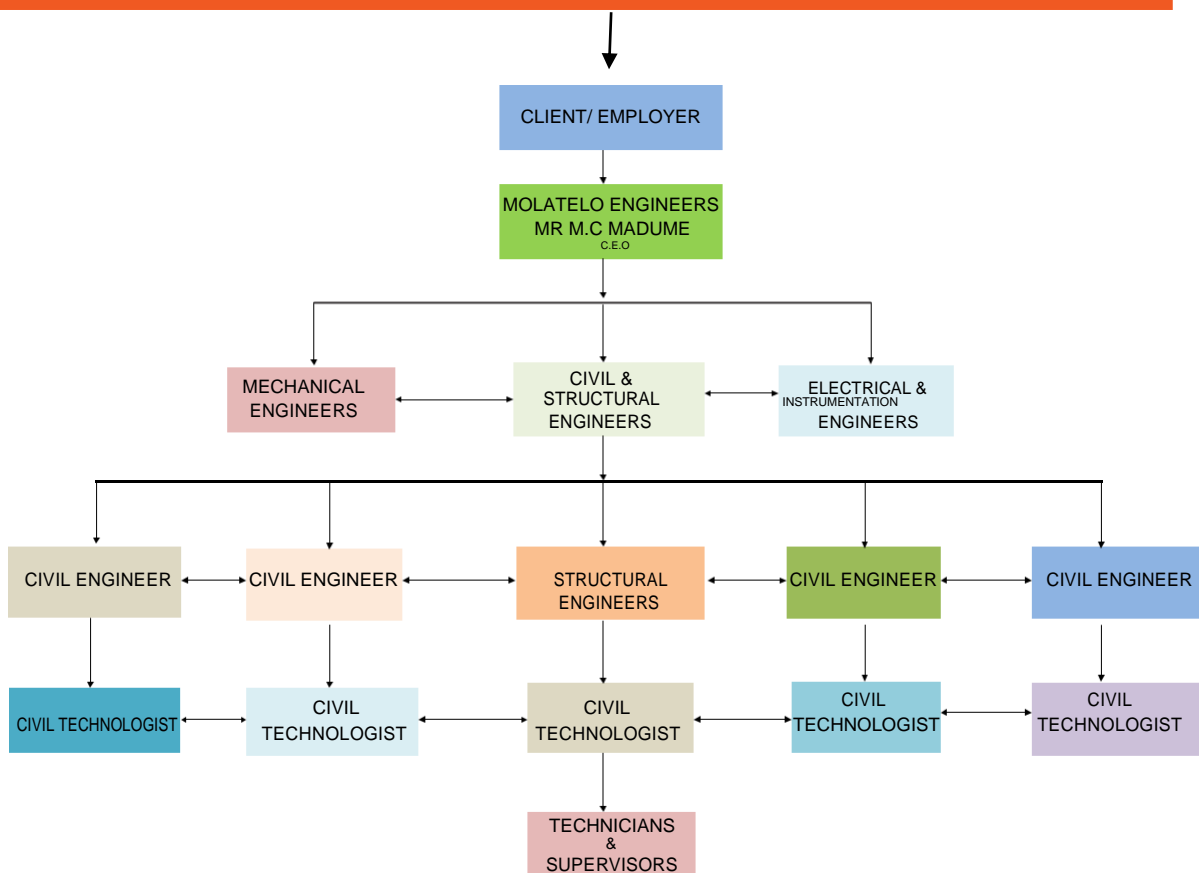


MANAGEMENT EMPLOYMENT AND TRAINING

KEY PERSONNEL

The Directors are the founders of the business and are all full time managing Directors who have a vast experience in the project management services in the construction services and all are qualified and responsible for the management of the business, ranging from administration to staff management. They are also involved in day to day running of the projects.

THE ORGANOGRAM OF THE MANAGEMENT STRUCTURE



TRACK RECORD & PROJECT EXPERIENCE

TRACK RECORD & PROJECT EXPERIENCE		
OF MOLATELO ENGINEERS PTY LTD		
- BULK WATER SERVICES		
CLIENT	PROJECT NAME	PROJECT DURATION
BUSHBUCKRIDGE LOCAL MUNICIPALITY	<p>APPOINTMENT LETTER: PANEL OF PROFESSIONAL ENGINEERING SERVICES FOR CIVIL ENGINEERING INFRASTRUCTURE PROJECTS FOR A PERIOD OF THREE YEARS: BLM/ENG/2020/23/P001</p> <p>-Letter of Appointment as Consultants: Construction of Roads in Mavilijan Region (R 14 981 344.00)</p> <p>-Upgrading of Bridge from college view to Malaneng with access roads (R 10 979 706.00)</p>	<p>24 Nov 2020 - 25 Nov 2023</p> <p>07 Sep 2020</p> <p>27 August 2021</p>
CITY OF TSHWANE	<p>Professional Civil Engineering Services For various projects in Tshwane for 3 years period. (RTD042014/15)</p> <p>-Appointment of professional Civil Engineering Services for the flooding Backlogs: Kudube 9 and 11 (Phase 1) (R 2 573 454.34)</p>	<p>01 Nov 2015 - 25 Nov 2018</p> <p>02-2018</p>
ROADS AGENCY LIMPOPO	<p>Appointment on the RAL panel of professional service providers in civil engineering on an as and when required basis for a maximum period of thirty six months</p> <p>-RAL/T1090/2021 Professional Engineering service for the Design and supervision of road D4220 in Limpopo (R 206 594 017.00)</p>	<p>05 Oct 2021 - Oct 2024</p> <p>08-2021</p>
Lepelle-Nkumpi Local Municipality	Appointment Letter : Panel of 25 professional service providers for a period of three years in the community and build facilities 2018/19 financial years {LNM 096/2017/18}	07/June/2018-Sept 2020
Ditsobotla Local Municipality	MIG/NW2487/ST/22/23: CONSTRUCTION OF BOIKHUTSO STORMWATER NETWORK	31/03/2022
Modimolle-Mookgophong Local Municipality	Professional Services: Roads and storm water for a period of 36 months, as and when needed	06/Feb/2020-March 2023
Makhuduthamaga Local Municipality	LIM473/Marishane street/18/19/003 Appointment of Molatelo Engineers for the feasibility study Design Coordination Tender processes supervision through to commissioning of the construction of marishane phaahla internal street	12/10/2018
MOPANI DISTRICT MUNICIPALITY	Appointment Letter: Pool of engineering consultants for water and sanitation infrastructure development	14 Sept 2020- 13 Sept 2023

--	--	--

TRACK RECORD OF MOLATELO ENGINEERS PTY LTD						
PERSONNEL	PROJECT	VALUE	CLIENT	PERSONAL INVOLVEMENT	PROJECT STATUS	REMARKS
Jonathan Ashilley (PrEng)	Design and construction supervision of 2000m long, 355mm dia uPVC bulkwater pipeline to Kathu, Gamagara LM	R4.5m	Gamagara LM, Kathu	Personally planned, designed, prepared tender document, and supervised construction to completion	From March 2007 to Dec 2007 (completed)	
Dan Madisa	Design and supervision of 19km bulkwater pipeline from Jane Furse to Lobethal, Greater Sekhukhune	R65m	Greater Sekhukhune DM	Jointly planned, designed, prepared tender document, and supervised construction to completion	2012 to 2014 (completed)	
	Upgrading of the Water Supply Scheme for Dipaleseng LM	R270m	Gert Sibande DM	Jointly planned, designed water scheme components. Project at detailed design stage	2012 to 2015	
Mophato Monyake (PrEng)	Moshaweng Water supply project (Groundwater development for 52 villages)	R100m	Moshaweng LM	Development of GW for 52 villages incl. water storage tanks, reticulation networks, etc	2012 to 2014	
	Lesotho Highlands Water scheme	R120m	Lesotho	Design of water supply scheme including optimisation studies for water use in reservoirs and rivers, etc	1998 - 2002	



067 117 2553



012 348 2258



Email: info@molateloeng.co.za



www.molateloengineers.co.za

KURUMAN

SEODINGWEG 8
KURUMAN
P O BOX 900
8460

NORTHERN CAPE

4 Kemp Street
Hartswater
8570